

# ISZL

## High School

### Profile 2019–20

#### RESPECT. MOTIVATE. ACHIEVE.

The International School of Zug and Luzern (ISZL) provides a high-quality Early Years to Grade 12 international education to day students resident in the cantons of central Switzerland. ISZL promotes a climate of respect, where outstanding teachers encourage students to develop self-confidence, positive relationships, and an enthusiastic approach to learning. ISZL is committed to excellence in education through a balanced academic programme. Students at ISZL share responsibility for their own learning in a caring and stimulating environment designed to promote achievement.

**CEEB Code**  
**796221**

**IB Code**  
**1837**

**UCAS Number**  
**48147**

#### LEADERSHIP

<b>Barry Dequanne</b>	Director
<b>Eddie Wexler</b>	Head of High School
<b>Louisa Radford</b>	High School Assistant Principal (Pastoral)
<b>Philip Bruce</b>	High School Assistant Principal (Academic)

#### COUNSELLORS

<b>Pauline Davidson</b>	College Counsellor pauline.davidson@iszl.ch
<b>Allan Birimac</b>	College Counsellor allan.birimac@iszl.ch
<b>Erin Tewsley</b>	High School Counsellor Grades 9 & 11
<b>Monika Birimac</b>	High School Counsellor Grades 10 & 12

#### CURRICULUM COORDINATORS

<b>Dr. Zoe Badcock</b>	AP/IB Coordinator zoe.badcock@iszl.ch
<b>Bob Sugden</b>	Career-related Programmes Coordinator robert.sugden@iszl.ch
<b>Maria le Guen</b>	IB MYP Coordinator maria.leguen@iszl.ch

#### ISZL RIVERSIDE CAMPUS



Rothusstrasse 4b  
6331 Hünenberg, Switzerland  
Tel. +41 41 768 29 50  
Fax +41 41 768 29 51  
office.riverside@iszl.ch, www.iszl.ch

#### ACADEMIC PROGRAMME

ISZL provides a rigorous college preparatory high school curriculum that leads to our NEASC accredited ISZL High School Diploma. Students partake in a well-rounded educational experience through the successful completion of the IB Middle Years Programme (MYP) in Grades 9–10 and the opportunity for specialised study in Grades 11–12. Upper High School students may enrol in a wide range of courses, including ISZL, College Board Advanced Placement (AP), International Baccalaureate (IB) and the Business and Technology (BTEC) Level 3 Subsidiary Diploma in Creative Media, while completing any one of three possible programmes: the full International Baccalaureate Diploma Programme (IBDP) or the International Baccalaureate Career-related Programme (IBCP), or our NEASC accredited ISZL High School Programme (HSP).

#### ACCREDITATION

ISZL is accredited by the Council of International Schools (CIS) and the New England Association of Schools and Colleges (NEASC), a U.S. based accrediting commission. ISZL is also a fully authorized International Baccalaureate (IB) World School offering four IB programmes to ages 3–18. It is additionally a member of the Swiss Group of International Schools (SGIS) and the Educational Collaborative for International Schools (ECIS).

#### HIGH SCHOOL GRADUATION REQUIREMENTS

In order to graduate from ISZL, students must demonstrate satisfactory completion of the IB Middle Years Programme and subsequent satisfactory completion of the IB Diploma Programme or IB Career-related Programme or ISZL High School Programme, including a minimum of:

- **Ten** courses over Grades 11 and 12
- **Six** courses in both Grades 9 and 10
- **Four** years: Service project(s)
- **Three** years: English and humanities and science and mathematics (at least one year in Grade 11 or 12)
- **Two** years: Language acquisition
- **Two** years: Arts or design or physical and health education

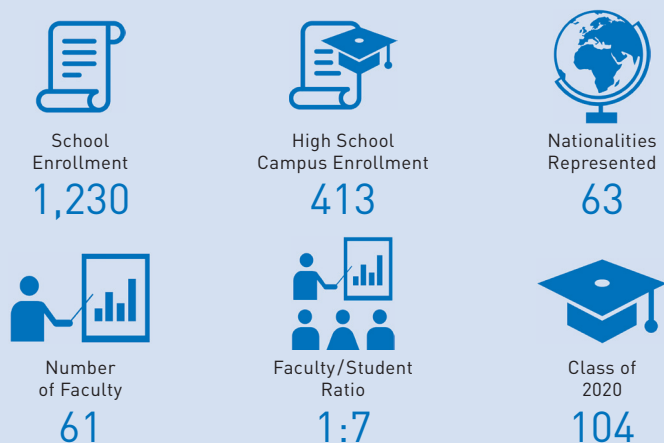
#### PERSONAL DEVELOPMENT PROGRAMME (PDP)

The PDP is a major component of the ISZL Pastoral Curriculum. The PDP is made up of three school-wide elements – Personal, Social and Health Education, Service Projects and a Personal Development Week – that engage students in their development as well-rounded individuals.

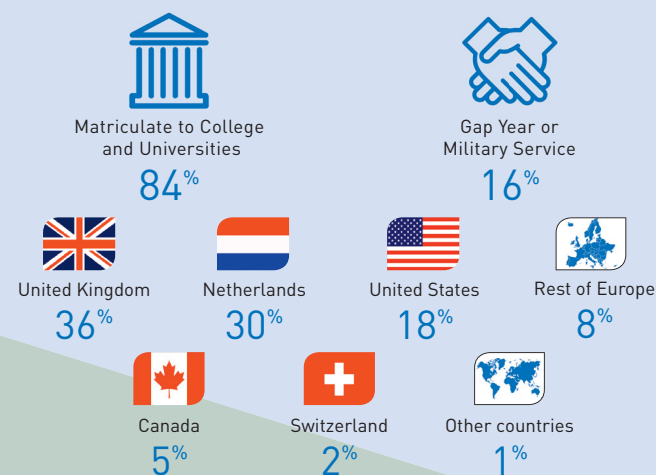


# ISZL AT A GLANCE

2019–20  
FACTS AND FIGURES



## CLASS OF 2019 MATRICULATION AND DESTINATIONS



## ISZL GRADING SYSTEM

### ISZL 7-POINT GRADING SCALE VS. LETTER GRADE AND PERCENTAGE RANGE

ISZL employs a 7-point internal grading scale influenced by, but not equivalent to, the IB 1–7 grading system. ISZL does not produce or report a Grade Point Average (GPA) nor rank students.

ISZL 7-POINT GRADING SCALE	ISZL APPROXIMATE LETTER GRADE	ISZL APPROXIMATE PERCENTAGE RANGE
7	A+	98 – 100
6	A- / A	90 – 97
5	B / B+	83 – 89
4	C+ / B-	78 – 82
3	C- / C	70 – 77
2	D	60 – 69
1	F	0 – 59

Please note that ISZL does not utilize a letter-based grading scale or percentages. The equivalencies provided above are additionally not universally recognized or accepted and, instead, are provided to help outside educational institutions gain an appreciation of our 1-7 grading scale

# ISZL COURSE OFFERINGS

2019–20  
ISZL COURSE OFFERINGS

## LANGUAGE & LITERATURE

- MYP English A: Language & Literature 9
- MYP English A: Language & Literature 10
- MYP German A: Language & Literature 9
- MYP German A: Language & Literature 10
- MYP Language A: Language & Literature (various languages) 9
- MYP Language A: Language & Literature (various languages) 10
- MYP English as an Additional Language (phases 3–5 offered)
- English: Innovations in Communication
- English Language & Literature
- AP® English Language & Composition
- AP® English Literature & Composition
- IB English A: Language & Literature SL/HL
- IB English A: Literature SL/HL
- IB English B SL/HL
- IB German A: Language & Literature SL/HL
- IB Language A: Literature SL (various languages – self taught)

- AP® Human Geography
- AP® US History
- IB Economics SL/HL
- IB Environmental Systems and Societies SL
- IB Global Politics SL/HL
- IB Geography SL/HL
- IB History SL/HL
- IB Psychology SL/HL
- BTEC: Subsidiary Diploma in Business Studies
- BTEC: Foundations in BTEC Business Studies

## LANGUAGE ACQUISITION

- MYP French Language Acquisition (phases 1–5 offered)
- MYP German Language Acquisition (phases 1–6 offered)
- MYP Spanish Language Acquisition (phases 1–5 offered)
- French High Intermediate
- German High Intermediate
- Spanish High Intermediate
- AP® French Language & Culture
- AP® German Language & Culture
- AP® Spanish Language & Culture
- IB German ab initio SL
- IB French B SL/HL
- IB German B SL/HL
- IB Spanish B SL/HL
- IB Language B SL/HL (various languages – self taught)

## MATHEMATICS

- MYP Mathematics 9
- MYP Mathematics 9 Extended
- MYP Mathematics 10
- MYP Mathematics 10 Extended
- Pre-Calculus
- AP® Calculus AB
- AP® Calculus BC
- IB Mathematical Studies SL
- IB Mathematics SL/HL
- IB Mathematics: Analysis & Approaches SL/HL
- IB Mathematics: Applications & Interpretations SL/HL

## SCIENCE

- MYP Sciences 9
- MYP Sciences 10
- Biology
- Chemistry
- Physics
- Science: Innovation in Action
- AP® Biology
- AP® Chemistry
- AP® Environmental Science
- AP® Physics 1
- AP® Physics C
- IB Biology SL/HL
- IB Chemistry SL/HL
- IB Computer Science SL/HL
- IB Environmental Systems and Societies SL
- IB Physics SL/HL
- IB Psychology SL/HL
- IB Sports, Exercise and Health Science SL/HL

## INDIVIDUALS AND SOCIETIES

- MYP Individuals & Societies 9
- MYP Individuals & Societies 10
- Humanities: Global Innovations
- AP® Comparative Government & Politics
- AP® Economics
- AP® European History

## THE ARTS

- MYP Drama 9
- MYP Music 9
- MYP Visual Art 9
- MYP Drama 10
- MYP Music 10
- MYP Visual Art 10
- Music: Innovations in Technology
- Studio Art
- AP® Studio Art 2-D Design
- AP® Studio Art 3-D Design
- IB Film SL/HL
- IB Music SL/HL
- IB Theatre SL/HL
- IB Visual Arts SL/HL
- BTEC: Subsidiary Diploma Creative Media
- BTEC: Foundations in BTEC Creative Media

## DESIGN & COMPUTER SCIENCE

- MYP Design 9
- MYP Design 10
- AP® Computer Science A
- IB Computer Science SL/HL
- BTEC: Subsidiary Diploma Creative Media
- BTEC: Foundations in BTEC Creative Media

## PHYSICAL EDUCATION AND HEALTH

- MYP Physical & Health Education 9
- MYP Physical & Health Education 10
- IB Sports, Exercise & Health Science SL/HL

## ELECTIVES

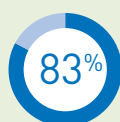
- Theory of Knowledge (required of all IBDP students)
- IB Personal & Professional Skills

# IB RESULTS

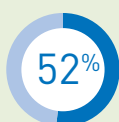
## INTERNATIONAL BACCALAUREATE (IB) GRADES 2019



SUBJECT GROUP	GRADE							TOTAL
	7	6	5	4	3	2	1	
Language A1 (Group 1)	8	40	20	4	0	0	0	72
Language B (Group 2)	15	22	7	2	0	0	0	46
Individuals & Societies (Group 3)	10	25	29	10	1	0	0	75
Experimental Sciences (Group 4)	7	24	17	16	6	0	0	70
Mathematics (Group 5)	2	12	30	11	7	1	0	63
Arts or Electives (Group 6)	2	9	2	3	0	0	0	16
<b>Total Number 2019</b>	<b>44</b>	<b>132</b>	<b>105</b>	46	14	1	0	342
<b>Total Percentage (%) 2019</b>	<b>13</b>	<b>39</b>	<b>31</b>	13	4	0	0	100
Total Number 2018	55	162	125	54	15	0	0	411
Total Percentage (%) 2018	13	40	30	13	4	0	0	100



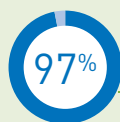
ISZL IB exams  
with scores of  
5 or higher



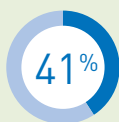
ISZL IB exams  
with scores of  
6 or higher

## INTERNATIONAL BACCALAUREATE DIPLOMA PROGRAMME (IBDP) GRADES 2019 VS. 2018 AND 2017

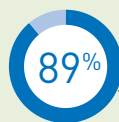
CATEGORY	2019	2018	2017
No. of candidates entered for Diploma	60	66	41
Number of candidates passing Diploma	58	66	40
<b>Avg. points of candidates passing Diploma</b>	<b>35</b>	35	36
<b>Highest points of ISZL student (max. 45)</b>	<b>44</b>	44	44
<b>Average subject grade of ISZL students</b>	<b>5.5</b>	5.4	5.7
World average of subjects studied by ISZL students	4.8	4.8	4.8
Students scoring 24–29 points	6 (10%)	6 (9%)	3 (8%)
Students scoring 30–35 points	28 (48%)	30 (45%)	14 (35%)
Students scoring over 36 points	24 (41%)	30 (45%)	23 (58%)



ISZL IB Diploma  
Programme  
pass rate



ISZL IBDP students  
scoring  
36 points or higher



ISZL IBDP students  
scoring  
30 points or higher



Highest IBDP points  
obtained by an  
ISZL student

44

ISZL average  
IBDP score

35

World average  
IBDP score: 4.8

Average subject  
grade of  
ISZL students

5.5



## TESTING RESTRICTIONS ON INTERNATIONAL STUDENTS AND U.S. CITIZENS ABROAD

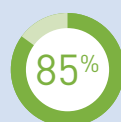
In recent years our students have had less access to SAT/SAT Subject and ACT tests because of fewer test dates abroad, fewer sites offering the test, score cancellations, technology difficulties, and higher fees. We ask that all higher education institutions take this into account when evaluating our students' applications.

# AP® RESULTS

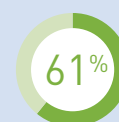
## ADVANCED PLACEMENT® (AP) EXAM GRADES 2019



SUBJECT GROUP	GRADE					TOTAL
	5	4	3	2	1	
Arts	1	3	3	0	0	7
English	3	4	9	6	0	22
Humanities	24	30	17	13	3	87
Languages	16	6	2	0	0	24
Mathematics	18	6	11	4	0	39
Sciences	18	15	15	10	1	59
<b>Total Number 2019</b>	<b>80</b>	<b>64</b>	<b>57</b>	33	4	238
<b>Total Percentage (%) 2019</b>	<b>34</b>	<b>27</b>	<b>24</b>	14	1	100
Total Number 2018	106	69	62	31	8	276
Total Percentage (%) 2018	38	25	23	11	3	100



ISZL AP exams  
with scores of  
3 or higher



ISZL AP exams  
with scores of  
4 or higher



AP® Scholars

12

AP® Scholars  
with  
honours

8

AP® Scholars  
with  
distinction

24

AP® Interna-  
tional Diploma  
recipients

5

# SAT & ACT RESULTS

## SAT RESULTS CLASS OF 2019

SAT

SECTION	MIDDLE 50%
Evidence Based Reading and Writing	595–670
Mathematics	590–690
Total	1190–1355



Evidence Based  
Reading and Writing

ISZL Mean 2019

629

World 2018:  
536



Mathematics

ISZL Mean 2019

638

World 2018:  
531



Total

ISZL Mean 2019

1267

World 2018:  
1068

## ACT RESULTS CLASS OF 2019

ACT

SECTION	MIDDLE 50%
English	25–30
Math	22–27
Reading	25–33
Science	23–33
Composite	24–31



English

ISZL  
Mean 2019

28

World 2018:  
20.2



Math

ISZL  
Mean 2019

26

World 2018:  
20.5



Reading

ISZL  
Mean 2019

31

World 2018:  
21.3



Science

ISZL  
Mean 2019

29

World 2018:  
20.8



Composite

ISZL  
Mean 2019

28

World 2018:  
20.8

# 2017-19 UNIVERSITY ACCEPTANCES AND MATRICULATION

Graduates from the International School of Zug and Luzern are admitted to universities and colleges around the world. Our students have a limit of ten applications worldwide. Schools who receive applications from ISZL can be assured the student is a serious applicant. Schools bolded indicate matriculation for the Class of 2019.



## AUSTRALIA

University of Sydney  
University of Wollongong  
Griffith University  
Australian National University  
Monash University  
University of Sydney  
UNSW Australia



## AUSTRIA

Vienna University of Economics & Business  
The University of Vienna



## CANADA

Bishop's University  
Brock University  
Concordia University  
Dalhousie University  
Emily Carr University of Art & Design  
HEC Montreal  
King's University College  
Laurentian University  
**McGill University**  
McMaster University  
Ontario College of Art & Design  
Queen's University  
Sheridan College  
Simon Fraser University  
University of British Columbia  
University of Calgary  
**University of Guelph**  
University of Ontario Institute of Technology  
University of Ottawa  
**University of Toronto**  
University of Waterloo  
Western University  
Wilfrid Laurier University  
York University  
Ryerson University



## DENMARK

Copenhagen Business School



## FINLAND

Hanken School of Economics



## FRANCE

American University Paris  
**Le Cordon Bleu Paris**



## GERMANY

Clausthal University of Technology  
EU Business School – Munich  
RWTH Aachen University  
LMU Munich  
Carl Benz School of Engineering  
Universitat Passau  
The German Sport University Cologne



## HUNGARY

Semmelweis University



## ITALY

**Bocconi University**  
Polimoda International Institute of Design and Marketing  
John Cabot University



## JAPAN

Juntendo University  
Sophia University  
St. Luke's International University  
Waseda University



## NETHERLANDS

Amsterdam University College  
Amsterdam University of Applied Sciences  
Eindhoven University of Technology  
**Erasmus University Rotterdam**  
**Erasmus University College**  
**Fontys University of Applied Sciences**  
**Groningen School of the Arts**  
HAN University of Applied Sciences

## Hanze University of Applied Sciences

**Hogeschool Utrecht**

Hotelschool The Hague

**HU University of Applied Sciences**

**Utrecht**

HZ University of Applied Sciences

Inholland University of Applied Sciences

**Leiden University**

**Leiden University College The Hague**

**Maastricht University**

Radboud University

Rotterdam University of Applied Sciences

**Technische Universiteit Delft**

The Hague University of Applied Sciences

Tilburg University

Tio University of Applied Sciences

**University College Tilburg**

University College Utrecht

University of Amsterdam

**University of Groningen**

University of Twente

Utrecht School of the Arts

**Utrecht University**

**VU Amsterdam**

**Wageningen University**

**Willem de Kooning Academie**

Zuyd Hogeschool



## NORWAY

The Norwegian University of Science & Technology



## SPAIN

ESADE

**IE University**

Toulouse Business School Barcelona

University of Navarra



## SWEDEN

Lund University

Stockholm School of Economics

Stockholm University



## SWITZERLAND

ETH Zurich

EU Business School – Montreaux

**Franklin University Switzerland**

University of Lucerne

University of St. Gallen

University of Zurich

Webster University – Geneva

Zurich University of the Arts



## TURKEY

Bahcesehir University

Yeditepe University



## UNITED KINGDOM

Aberystwyth University

Anglia Ruskin University

Arts University Bournemouth

Aston University

Bangor University

Bath Spa University

Bournemouth University

British and Irish Modern Music Institute

Brunel University London

Cardiff University

City University of London

Coventry University

De Montfort University

**Durham University**

Edinburgh Napier University

Falmouth University

Goldsmiths, University of London

Heriot-Watt University

**Imperial College London**

Istituto Marangoni, London

Keele University

**King's College London**

Kingston University

**Lancaster University**

Leeds Beckett University

**Leeds College of Art & Design**

Liverpool John Moores University

London College of Communication

London Metropolitan University

London South Bank University

Loughborough University

Manchester Metropolitan University

Middlesex University

New College of the Humanities

Newcastle University

Northumbria University

Oxford Brookes University

Queen Mary, University of London

Ravensbourne University London

Regent's University London

Richmond, The American International

University in London

Robert Gordon University

**Royal Holloway, University of London**

Royal Veterinary College

School of Oriental and African Studies,

University of London

Southampton Solent University

St Mary's University, Twickenham,

London

Swansea University

The Institute of Contemporary Music

Performance

**The London School of Economics and**

**Political Science**

**The University of Edinburgh**

The University of Manchester

The University of Sheffield

The University of Warwick

University College London

University for the Creative Arts at

Farnham

University of Aberdeen

**University of Bath**

**University of Birmingham**

University of Bradford

University of Brighton

University of Bristol

University of Buckingham

University of Cambridge

University of Central Lancashire

University of Chester

University of East Anglia

University of East London

University of Essex

**University of Exeter**

University of Glasgow

**University of Kent**

University of Leeds

University of Leicester

University of Lincoln

University of Liverpool

University of Newcastle

University of Northampton

**University of Nottingham**

University of Oxford

University of Plymouth

University of Portsmouth

University of Reading

University of Roehampton

University of South Wales

University of Southampton

**University of St. Andrews**

University of Stirling

**University of Surrey**

**University of Sussex**

**University of the Arts London**

**University of the West of England**

University of West London

University of Westminster

University of Wolverhampton

University of Worcester

University of York



## UNITED STATES

American University

Appalachian State University

Assumption College

Babson College

Benedictine University

Bentley University

Boston College

Boston University

Brown University

Bryant University

Butler University

California College of the Arts

Central Connecticut State University

Champlain College

Clark University

Clemson University

College of William and Mary

Colorado State University

Columbia University/Sciences Po

Connecticut College

DePaul University

Drexel University

East Tennessee State University

Eckerd College

Emmanuel College

Emory University

Endicott College

Fairfield University

Florida Institute of Technology

Florida State University

Fordham University

Georgia Institute of Technology

Hawaii Pacific University

Hofstra University

Hult International Business School

– San Francisco

Indiana University at Bloomington

Jacksonville University

La Salle University

Lasell College

Long Island University

Loyola Marymount University

Loyola University Chicago

**Lynn University**

Macalester College

Marist College

Merrimack College

New College of Florida

New York University

North Carolina State University

**Northeastern University**

Oberlin College and Conservatory

Oregon State University

Pace University

Pennsylvania State University

Pepperdine University

Pitzer College

Pratt Institute

Purdue University

Rensselaer Polytechnic Institute

Rhode Island School of Design

Ringling College of Art and Design

Rollins College

Rose-Hulman Institute of Technology

Saint Michael's College

Santa Clara University

Savannah College of Art and Design

Seattle University

Seton Hall University

Southern Methodist University

Southwestern University

Springfield College

Suffolk University

**Syracuse University**

**Temple University**

Texas Christian University

The George Washington University

The New School

The University of North Carolina at

Chapel Hill

**The University of Oklahoma**

The University of Tampa

The University of Texas at Austin

Tulane University

University at Buffalo The State University

of New York

University of California, Davis

University of California, Irvine

University of California, Los Angeles

University of California, San Diego

University of California, Santa Barbara

University of California, Santa Cruz