

ISZL

High School

Profile 2019–20

RESPECT. MOTIVATE. ACHIEVE.

The International School of Zug and Luzern (ISZL) provides a high-quality Early Years to Grade 12 international education to day students resident in the cantons of central Switzerland. ISZL promotes a climate of respect, where outstanding teachers encourage students to develop self-confidence, positive relationships, and an enthusiastic approach to learning. ISZL is committed to excellence in education through a balanced academic programme. Students at ISZL share responsibility for their own learning in a caring and stimulating environment designed to promote achievement.

CEEB Code
796221

IB Code
1837

UCAS Number
48147

LEADERSHIP

Barry Dequanne	Director
Eddie Wexler	Head of High School
Louisa Radford	High School Assistant Principal (Pastoral)
Philip Bruce	High School Assistant Principal (Academic)

COUNSELLORS

Pauline Davidson	College Counsellor pauline.davidson@iszl.ch
Allan Birimac	College Counsellor allan.birimac@iszl.ch
Erin Tewsley	High School Counsellor Grades 9 & 11
Monika Birimac	High School Counsellor Grades 10 & 12

CURRICULUM COORDINATORS

Dr. Zoe Badcock	AP/IB Coordinator zoe.badcock@iszl.ch
Bob Sugden	Career-related Programmes Coordinator robert.sugden@iszl.ch
Maria le Guen	IB MYP Coordinator maria.leguen@iszl.ch

ISZL RIVERSIDE CAMPUS



Rothusstrasse 4b
6331 Hünenberg, Switzerland
Tel. +41 41 768 29 50
Fax +41 41 768 29 51
office.riverside@iszl.ch, www.iszl.ch

ACADEMIC PROGRAMME

ISZL provides a rigorous college preparatory high school curriculum that leads to our NEASC accredited ISZL High School Diploma. Students partake in a well-rounded educational experience through the successful completion of the IB Middle Years Programme (MYP) in Grades 9–10 and the opportunity for specialised study in Grades 11–12. Upper High School students may enrol in a wide range of courses, including ISZL, College Board Advanced Placement (AP), International Baccalaureate (IB) and the Business and Technology (BTEC) Level 3 Subsidiary Diploma in Creative Media, while completing any one of three possible programmes: the full International Baccalaureate Diploma Programme (IBDP) or the International Baccalaureate Career-related Programme (IBCP), or our NEASC accredited ISZL High School Programme (HSP).

ACCREDITATION

ISZL is accredited by the Council of International Schools (CIS) and the New England Association of Schools and Colleges (NEASC), a U.S. based accrediting commission. ISZL is also a fully authorized International Baccalaureate (IB) World School offering four IB programmes to ages 3–18. It is additionally a member of the Swiss Group of International Schools (SGIS) and the Educational Collaborative for International Schools (ECIS).

HIGH SCHOOL GRADUATION REQUIREMENTS

In order to graduate from ISZL, students must demonstrate satisfactory completion of the IB Middle Years Programme and subsequent satisfactory completion of the IB Diploma Programme or IB Career-related Programme or ISZL High School Programme, including a minimum of:

- **Ten** courses over Grades 11 and 12
- **Six** courses in both Grades 9 and 10
- **Four** years: Service project(s)
- **Three** years: English and humanities and science and mathematics (at least one year in Grade 11 or 12)
- **Two** years: Language acquisition
- **Two** years: Arts or design or physical and health education

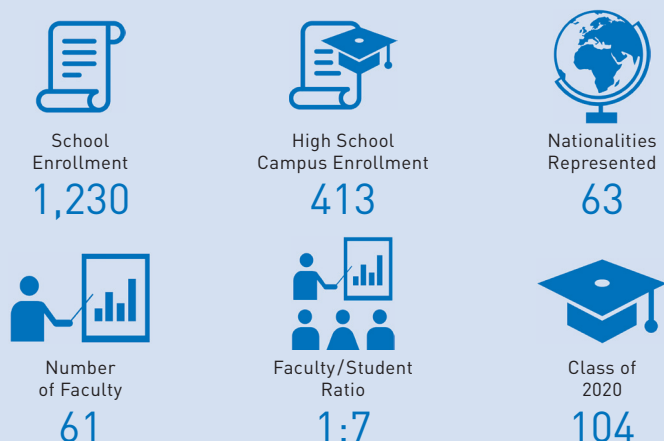
PERSONAL DEVELOPMENT PROGRAMME (PDP)

The PDP is a major component of the ISZL Pastoral Curriculum. The PDP is made up of three school-wide elements – Personal, Social and Health Education, Service Projects and a Personal Development Week – that engage students in their development as well-rounded individuals.

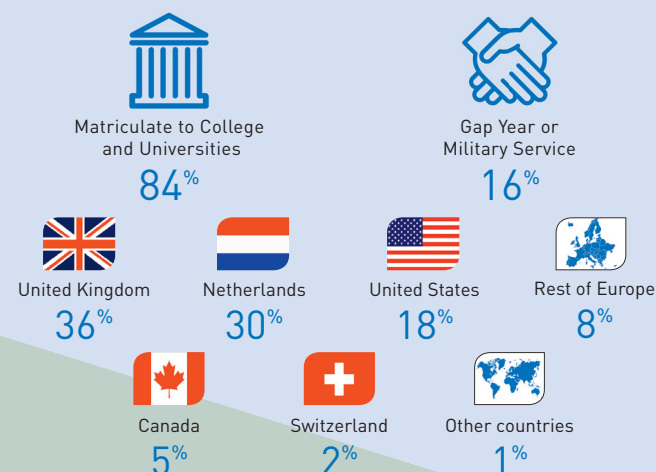


ISZL AT A GLANCE

2019–20
FACTS AND FIGURES



CLASS OF 2019 MATRICULATION AND DESTINATIONS



ISZL GRADING SYSTEM

ISZL 7-POINT GRADING SCALE VS. LETTER GRADE AND PERCENTAGE RANGE

ISZL employs a 7-point internal grading scale influenced by, but not equivalent to, the IB 1–7 grading system. ISZL does not produce or report a Grade Point Average (GPA) nor rank students.

ISZL 7-POINT GRADING SCALE	ISZL APPROXIMATE LETTER GRADE	ISZL APPROXIMATE PERCENTAGE RANGE
7	A+	98 – 100
6	A- / A	90 – 97
5	B / B+	83 – 89
4	C+ / B-	78 – 82
3	C- / C	70 – 77
2	D	60 – 69
1	F	0 – 59

Please note that ISZL does not utilize a letter-based grading scale or percentages. The equivalencies provided above are additionally not universally recognized or accepted and, instead, are provided to help outside educational institutions gain an appreciation of our 1-7 grading scale

ISZL COURSE OFFERINGS

2019–20
ISZL COURSE OFFERINGS

LANGUAGE & LITERATURE

- MYP English A: Language & Literature 9
- MYP English A: Language & Literature 10
- MYP German A: Language & Literature 9
- MYP German A: Language & Literature 10
- MYP Language A: Language & Literature (various languages) 9
- MYP Language A: Language & Literature (various languages) 10
- MYP English as an Additional Language (phases 3–5 offered)
- English: Innovations in Communication
- English Language & Literature
- AP® English Language & Composition
- AP® English Literature & Composition
- IB English A: Language & Literature SL/HL
- IB English A: Literature SL/HL
- IB English B SL/HL
- IB German A: Language & Literature SL/HL
- IB Language A: Literature SL (various languages – self taught)

- AP® Human Geography
- AP® US History
- IB Economics SL/HL
- IB Environmental Systems and Societies SL
- IB Global Politics SL/HL
- IB Geography SL/HL
- IB History SL/HL
- IB Psychology SL/HL
- BTEC: Subsidiary Diploma in Business Studies
- BTEC: Foundations in BTEC Business Studies

LANGUAGE ACQUISITION

- MYP French Language Acquisition (phases 1–5 offered)
- MYP German Language Acquisition (phases 1–6 offered)
- MYP Spanish Language Acquisition (phases 1–5 offered)
- French High Intermediate
- German High Intermediate
- Spanish High Intermediate
- AP® French Language & Culture
- AP® German Language & Culture
- AP® Spanish Language & Culture
- IB German ab initio SL
- IB French B SL/HL
- IB German B SL/HL
- IB Spanish B SL/HL
- IB Language B SL/HL (various languages – self taught)

MATHEMATICS

- MYP Mathematics 9
- MYP Mathematics 9 Extended
- MYP Mathematics 10
- MYP Mathematics 10 Extended
- Pre-Calculus
- AP® Calculus AB
- AP® Calculus BC
- IB Mathematical Studies SL
- IB Mathematics SL/HL
- IB Mathematics: Analysis & Approaches SL/HL
- IB Mathematics: Applications & Interpretations SL/HL

SCIENCE

- MYP Sciences 9
- MYP Sciences 10
- Biology
- Chemistry
- Physics
- Science: Innovation in Action
- AP® Biology
- AP® Chemistry
- AP® Environmental Science
- AP® Physics 1
- AP® Physics C
- IB Biology SL/HL
- IB Chemistry SL/HL
- IB Computer Science SL/HL
- IB Environmental Systems and Societies SL
- IB Physics SL/HL
- IB Psychology SL/HL
- IB Sports, Exercise and Health Science SL/HL

INDIVIDUALS AND SOCIETIES

- MYP Individuals & Societies 9
- MYP Individuals & Societies 10
- Humanities: Global Innovations
- AP® Comparative Government & Politics
- AP® Economics
- AP® European History

THE ARTS

- MYP Drama 9
- MYP Music 9
- MYP Visual Art 9
- MYP Drama 10
- MYP Music 10
- MYP Visual Art 10
- Music: Innovations in Technology
- Studio Art
- AP® Studio Art 2-D Design
- AP® Studio Art 3-D Design
- IB Film SL/HL
- IB Music SL/HL
- IB Theatre SL/HL
- IB Visual Arts SL/HL
- BTEC: Subsidiary Diploma Creative Media
- BTEC: Foundations in BTEC Creative Media

DESIGN & COMPUTER SCIENCE

- MYP Design 9
- MYP Design 10
- AP® Computer Science A
- IB Computer Science SL/HL
- BTEC: Subsidiary Diploma Creative Media
- BTEC: Foundations in BTEC Creative Media

PHYSICAL EDUCATION AND HEALTH

- MYP Physical & Health Education 9
- MYP Physical & Health Education 10
- IB Sports, Exercise & Health Science SL/HL

ELECTIVES

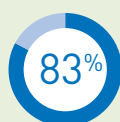
- Theory of Knowledge (required of all IBDP students)
- IB Personal & Professional Skills

IB RESULTS

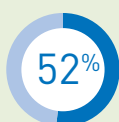
INTERNATIONAL BACCALAUREATE (IB) GRADES 2019



SUBJECT GROUP	GRADE							TOTAL
	7	6	5	4	3	2	1	
Language A1 (Group 1)	8	40	20	4	0	0	0	72
Language B (Group 2)	15	22	7	2	0	0	0	46
Individuals & Societies (Group 3)	10	25	29	10	1	0	0	75
Experimental Sciences (Group 4)	7	24	17	16	6	0	0	70
Mathematics (Group 5)	2	12	30	11	7	1	0	63
Arts or Electives (Group 6)	2	9	2	3	0	0	0	16
Total Number 2019	44	132	105	46	14	1	0	342
Total Percentage (%) 2019	13	39	31	13	4	0	0	100
Total Number 2018	55	162	125	54	15	0	0	411
Total Percentage (%) 2018	13	40	30	13	4	0	0	100



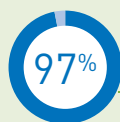
ISZL IB exams
with scores of
5 or higher



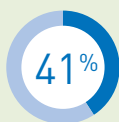
ISZL IB exams
with scores of
6 or higher

INTERNATIONAL BACCALAUREATE DIPLOMA PROGRAMME (IBDP) GRADES 2019 VS. 2018 AND 2017

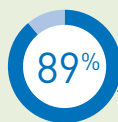
CATEGORY	2019	2018	2017
No. of candidates entered for Diploma	60	66	41
Number of candidates passing Diploma	58	66	40
Avg. points of candidates passing Diploma	35	35	36
Highest points of ISZL student (max. 45)	44	44	44
Average subject grade of ISZL students	5.5	5.4	5.7
World average of subjects studied by ISZL students	4.8	4.8	4.8
Students scoring 24–29 points	6 (10%)	6 (9%)	3 (8%)
Students scoring 30–35 points	28 (48%)	30 (45%)	14 (35%)
Students scoring over 36 points	24 (41%)	30 (45%)	23 (58%)



ISZL IB Diploma
Programme
pass rate



ISZL IBDP students
scoring
36 points or higher



ISZL IBDP students
scoring
30 points or higher



Highest IBDP points
obtained by an
ISZL student

44

ISZL average
IBDP score

35

World average
IBDP score: 4.8

Average subject
grade of
ISZL students

5.5

TESTING RESTRICTIONS ON INTERNATIONAL STUDENTS AND U.S. CITIZENS ABROAD

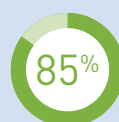
In recent years our students have had less access to SAT/SAT Subject and ACT tests because of fewer test dates abroad, fewer sites offering the test, score cancellations, technology difficulties, and higher fees. We ask that all higher education institutions take this into account when evaluating our students' applications.

AP® RESULTS

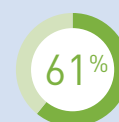
ADVANCED PLACEMENT® (AP) EXAM GRADES 2019



SUBJECT GROUP	GRADE					TOTAL
	5	4	3	2	1	
Arts	1	3	3	0	0	7
English	3	4	9	6	0	22
Humanities	24	30	17	13	3	87
Languages	16	6	2	0	0	24
Mathematics	18	6	11	4	0	39
Sciences	18	15	15	10	1	59
Total Number 2019	80	64	57	33	4	238
Total Percentage (%) 2019	34	27	24	14	1	100
Total Number 2018	106	69	62	31	8	276
Total Percentage (%) 2018	38	25	23	11	3	100



ISZL AP exams
with scores of
3 or higher



ISZL AP exams
with scores of
4 or higher



AP® Scholars

12

AP® Scholars
with
honours

8

AP® Scholars
with
distinction

24

AP® Interna-
tional Diploma
recipients

5

SAT & ACT RESULTS

SAT RESULTS CLASS OF 2019

SAT

SECTION	MIDDLE 50%
Evidence Based Reading and Writing	595–670
Mathematics	590–690
Total	1190–1355



Evidence Based
Reading and Writing

ISZL Mean 2019

629

World 2018:
536



Mathematics

ISZL Mean 2019

638

World 2018:
531



Total

ISZL Mean 2019

1267

World 2018:
1068

ACT RESULTS CLASS OF 2019

ACT

SECTION	MIDDLE 50%
English	25–30
Math	22–27
Reading	25–33
Science	23–33
Composite	24–31



English

ISZL
Mean 2019

28

World 2018:
20.2



Math

ISZL
Mean 2019

26

World 2018:
20.5



Reading

ISZL
Mean 2019

31

World 2018:
21.3



Science

ISZL
Mean 2019

29

World 2018:
20.8



Composite

ISZL
Mean 2019

28

World 2018:
20.8

2017-19 UNIVERSITY ACCEPTANCES AND MATRICULATION

Graduates from the International School of Zug and Luzern are admitted to universities and colleges around the world. Our students have a limit of ten applications worldwide. Schools who receive applications from ISZL can be assured the student is a serious applicant. Schools **bolded** indicate matriculation for the Class of 2019.



AUSTRALIA

Australian National University
Griffith University
Monash University
University of Sydney
University of Wollongong
UNSW Australia



AUSTRIA

Vienna University of Economics & Business
The University of Vienna



CANADA

Bishop's University
Brock University
Concordia University
Dalhousie University
Emily Carr University of Art & Design
HEC Montreal
King's University College
Laurentian University
McGill University
McMaster University
Ontario College of Art & Design
Queen's University
Ryerson University
Sheridan College
Simon Fraser University
University of British Columbia
University of Calgary
University of Guelph
University of Ontario Institute of Technology
University of Ottawa
University of Toronto
University of Waterloo
Western University
Wilfrid Laurier University
York University



DENMARK

Copenhagen Business School



FINLAND

Hanken School of Economics



FRANCE

American University Paris
Le Cordon Bleu Paris



GERMANY

Carl Benz School of Engineering
Clausthal University of Technology
EU Business School – Munich
LMU Munich
RWTH Aachen University
Universität Passau
The German Sport University Cologne



HUNGARY

Semmelweis University



ITALY

Bocconi University
John Cabot University
Polimoda International Institute of Design and Marketing



JAPAN

Juntendo University
Sophia University
St. Luke's International University
Waseda University



NETHERLANDS

Amsterdam University College
Amsterdam University of Applied Sciences
Eindhoven University of Technology
Erasmus University Rotterdam
Erasmus University College
Fontys University of Applied Sciences
Groningen School of the Arts
HAN University of Applied Sciences
Hanze University of Applied Sciences

Hogeschool Utrecht

Hotelschool The Hague
HU University of Applied Sciences Utrecht
HZ University of Applied Sciences
Inholland University of Applied Sciences
Leiden University
Leiden University College The Hague
Maastricht University
Radboud University
Rotterdam University of Applied Sciences
Technische Universiteit Delft
The Hague University of Applied Sciences
Tilburg University
Tio University of Applied Sciences
University College Tilburg
University College Utrecht
University of Amsterdam
University of Groningen
University of Twente
Utrecht School of the Arts
Utrecht University
VU Amsterdam
Wageningen University
Willem de Kooning Academie
Zuyd Hogeschool



NORWAY

The Norwegian University of Science & Technology



SPAIN

ESADE
IE University
Toulouse Business School Barcelona
University of Navarra



SWEDEN

Lund University
Stockholm School of Economics
Stockholm University



SWITZERLAND

ETH Zurich
EU Business School – Montreux
Franklin University Switzerland
University of Lucerne
University of St. Gallen
University of Zurich
Webster University – Geneva
Zurich University of the Arts



TURKEY

Bahcesehir University
Yeditepe University



UNITED KINGDOM

Aberystwyth University
Anglia Ruskin University
Arts University Bournemouth
Aston University
Bangor University
Bath Spa University
Bournemouth University
British and Irish Modern Music Institute
Brunel University London
Cardiff University
City University of London
Coventry University
De Montfort University
Durham University
Edinburgh Napier University
Falmouth University
Goldsmiths, University of London
Heriot-Watt University
Imperial College London
Istituto Marangoni, London
Keele University
King's College London
Kingston University
Lancaster University
Leeds Beckett University
Leeds College of Art & Design
Liverpool John Moores University
London College of Communication
London Metropolitan University
London South Bank University
Loughborough University
Manchester Metropolitan University
Middlesex University

New College of the Humanities
Newcastle University
Northumbria University
Oxford Brookes University
Queen Mary, University of London
Ravensbourne University London
Regent's University London
Richmond, The American International University in London
Robert Gordon University
Royal Holloway, University of London
Royal Veterinary College
School of Oriental and African Studies, University of London
Southampton Solent University
St Mary's University, Twickenham, London
Swansea University
The Institute of Contemporary Music Performance

The London School of Economics and Political Science

The University of Edinburgh

The University of Manchester
The University of Sheffield
The University of Warwick
University College London
University for the Creative Arts at Farnham

University of Aberdeen

University of Bath

University of Birmingham

University of Bradford
University of Brighton
University of Bristol
University of Buckingham
University of Cambridge
University of Central Lancashire
University of Chester
University of East Anglia
University of East London
University of Essex

University of Exeter

University of Glasgow

University of Kent

University of Leeds
University of Leicester
University of Lincoln
University of Liverpool
University of Newcastle
University of Northampton

University of Nottingham

University of Oxford
University of Plymouth
University of Portsmouth
University of Reading
University of Roehampton
University of South Wales
University of Southampton

University of St. Andrews

University of Stirling

University of Surrey

University of Sussex

University of the Arts London

University of the West of England

University of West London
University of Westminster
University of Wolverhampton
University of Worcester
University of York



UNITED STATES

American University
Appalachian State University
Assumption College
Babson College
Benedictine University
Bentley University
Boston College
Boston University
Brown University
Bryant University
Butler University
California College of the Arts
Central Connecticut State University
Champlain College
Clark University
Clemson University
College of William and Mary
Colorado State University
Columbia University/Sciences Po
Connecticut College
DePaul University
Drexel University
East Tennessee State University

Eckerd College
Emmanuel College
Emory University
Endicott College
Fairfield University
Florida Institute of Technology
Florida State University
Fordham University
Georgia Institute of Technology
Hawaii Pacific University
Hofstra University
Hult International Business School – San Francisco
Indiana University at Bloomington
Jacksonville University
La Salle University
Lasell College
Long Island University
Loyola Marymount University
Loyola University Chicago

Lynn University

Macalester College
Marist College
Merrimack College
New College of Florida
New York University
North Carolina State University

Northeastern University

Oberlin College and Conservatory

Oregon State University

Pace University

Pennsylvania State University

Pepperdine University

Pitzer College

Pratt Institute

Purdue University

Rensselaer Polytechnic Institute

Rhode Island School of Design

Ringling College of Art and Design

Rollins College

Rose-Hulman Institute of Technology

Saint Michael's College

Santa Clara University

Savannah College of Art and Design

Seattle University

Seton Hall University

Southern Methodist University

Southwestern University

Springfield College

Suffolk University

Syracuse University

Temple University

Texas Christian University

The George Washington University

The New School

The University of North Carolina at Chapel Hill

The University of Oklahoma

The University of Tampa

The University of Texas at Austin

Tulane University

University at Buffalo The State University of New York

University of California, Davis

University of California, Irvine

University of California, Los Angeles

University of California, San Diego

University of California, Santa Barbara

University of California, Santa Cruz

University of Connecticut

University of Delaware

University of Denver

University of Maine

University of Maryland, Baltimore County

University of Maryland, College Park

University of Massachusetts, Amherst

University of Miami

University of Michigan

University of New Hampshire

University of North Carolina at Wilmington

University of Oregon

University of Rhode Island

University of Richmond

University of San Francisco

University of Southern California

University of Washington

University of Vermont

Villanova University

West Virginia University

Wheaton College

Wheeling Jesuit University

Xavier University